



Demographic and Income Comparison Profile

7201 FM-725, New Braunfels, Texas, 78130
Rings: 2, 5, 7 mile radii

Prepared by Esri
Latitude: 29.60846
Longitude: -98.05437

	2 miles	5 miles	7 miles
Census 2010 Summary			
Population	5,136	20,931	64,167
Households	1,934	7,055	22,453
Families	1,422	5,394	16,526
Average Household Size	2.59	2.86	2.78
Owner Occupied Housing Units	1,487	5,455	15,614
Renter Occupied Housing Units	447	1,600	6,839
Median Age	39.1	35.5	34.8
2016 Summary			
Population	5,345	24,243	74,698
Households	2,007	8,101	25,913
Families	1,462	6,164	19,013
Average Household Size	2.61	2.90	2.82
Owner Occupied Housing Units	1,478	6,046	17,472
Renter Occupied Housing Units	529	2,054	8,441
Median Age	40.0	36.2	35.7
Median Household Income	\$58,436	\$58,255	\$54,663
Average Household Income	\$79,198	\$73,334	\$67,124
2021 Summary			
Population	5,838	27,916	84,628
Households	2,198	9,319	29,233
Families	1,596	7,077	21,412
Average Household Size	2.61	2.92	2.84
Owner Occupied Housing Units	1,624	6,939	19,763
Renter Occupied Housing Units	574	2,380	9,470
Median Age	41.4	36.6	36.2
Median Household Income	\$69,817	\$63,686	\$59,460
Average Household Income	\$86,844	\$78,712	\$72,432
Trends: 2016-2021 Annual Rate			
Population	1.78%	2.86%	2.53%
Households	1.83%	2.84%	2.44%
Families	1.77%	2.80%	2.41%
Owner Households	1.90%	2.79%	2.49%
Median Household Income	3.62%	1.80%	1.70%

Source: U.S. Census Bureau, Census 2010 Summary File 1. Esri forecasts for 2016 and 2021.

May 24, 2017



Demographic and Income Comparison Profile

7201 FM-725, New Braunfels, Texas, 78130
Rings: 2, 5, 7 mile radii

Prepared by Esri
Latitude: 29.60846
Longitude: -98.05437

2016 Households by Income	2 miles		5 miles		7 miles	
	Number	Percent	Number	Percent	Number	Percent
<\$15,000	188	9.4%	830	10.2%	2,896	11.2%
\$15,000 - \$24,999	149	7.4%	625	7.7%	2,602	10.0%
\$25,000 - \$34,999	212	10.6%	741	9.1%	2,737	10.6%
\$35,000 - \$49,999	300	14.9%	1,149	14.2%	3,375	13.0%
\$50,000 - \$74,999	359	17.9%	1,650	20.4%	5,181	20.0%
\$75,000 - \$99,999	293	14.6%	1,330	16.4%	4,088	15.8%
\$100,000 - \$149,999	286	14.3%	1,156	14.3%	3,559	13.7%
\$150,000 - \$199,999	119	5.9%	357	4.4%	938	3.6%
\$200,000+	100	5.0%	263	3.2%	538	2.1%
Median Household Income	\$58,436		\$58,255		\$54,663	
Average Household Income	\$79,198		\$73,334		\$67,124	
Per Capita Income	\$29,816		\$25,122		\$23,792	

2021 Households by Income	2 miles		5 miles		7 miles	
	Number	Percent	Number	Percent	Number	Percent
<\$15,000	214	9.7%	981	10.5%	3,281	11.2%
\$15,000 - \$24,999	159	7.2%	698	7.5%	2,801	9.6%
\$25,000 - \$34,999	288	13.1%	986	10.6%	3,416	11.7%
\$35,000 - \$49,999	198	9.0%	910	9.8%	2,642	9.0%
\$50,000 - \$74,999	285	13.0%	1,699	18.2%	5,242	17.9%
\$75,000 - \$99,999	401	18.2%	1,754	18.8%	5,425	18.6%
\$100,000 - \$149,999	381	17.3%	1,499	16.1%	4,543	15.5%
\$150,000 - \$199,999	147	6.7%	460	4.9%	1,204	4.1%
\$200,000+	124	5.6%	332	3.6%	679	2.3%
Median Household Income	\$69,817		\$63,686		\$59,460	
Average Household Income	\$86,844		\$78,712		\$72,432	
Per Capita Income	\$32,494		\$26,700		\$25,449	

Data Note: Income is expressed in current dollars.

Source: U.S. Census Bureau, Census 2010 Summary File 1. Esri forecasts for 2016 and 2021.



Demographic and Income Comparison Profile

7201 FM-725, New Braunfels, Texas, 78130
Rings: 2, 5, 7 mile radii

Prepared by Esri
Latitude: 29.60846
Longitude: -98.05437

2010 Population by Age	2 miles		5 miles		7 miles	
	Number	Percent	Number	Percent	Number	Percent
Age 0 - 4	335	6.5%	1,496	7.1%	4,936	7.7%
Age 5 - 9	388	7.6%	1,585	7.6%	4,955	7.7%
Age 10 - 14	349	6.8%	1,598	7.6%	4,812	7.5%
Age 15 - 19	309	6.0%	1,623	7.8%	4,870	7.6%
Age 20 - 24	297	5.8%	1,408	6.7%	4,300	6.7%
Age 25 - 34	622	12.1%	2,610	12.5%	8,359	13.0%
Age 35 - 44	673	13.1%	2,829	13.5%	8,516	13.3%
Age 45 - 54	776	15.1%	3,007	14.4%	8,476	13.2%
Age 55 - 64	741	14.4%	2,483	11.9%	7,052	11.0%
Age 65 - 74	401	7.8%	1,408	6.7%	4,319	6.7%
Age 75 - 84	176	3.4%	675	3.2%	2,618	4.1%
Age 85+	72	1.4%	210	1.0%	955	1.5%

2016 Population by Age	2 miles		5 miles		7 miles	
	Number	Percent	Number	Percent	Number	Percent
Age 0 - 4	330	6.2%	1,670	6.9%	5,492	7.4%
Age 5 - 9	355	6.6%	1,711	7.1%	5,495	7.4%
Age 10 - 14	392	7.3%	1,770	7.3%	5,339	7.1%
Age 15 - 19	324	6.1%	1,770	7.3%	5,243	7.0%
Age 20 - 24	267	5.0%	1,621	6.7%	5,076	6.8%
Age 25 - 34	670	12.5%	3,210	13.2%	10,070	13.5%
Age 35 - 44	678	12.7%	3,138	12.9%	9,550	12.8%
Age 45 - 54	711	13.3%	3,165	13.1%	9,282	12.4%
Age 55 - 64	784	14.7%	3,044	12.6%	8,739	11.7%
Age 65 - 74	560	10.5%	2,080	8.6%	6,186	8.3%
Age 75 - 84	211	3.9%	818	3.4%	3,067	4.1%
Age 85+	63	1.2%	245	1.0%	1,159	1.6%

2021 Population by Age	2 miles		5 miles		7 miles	
	Number	Percent	Number	Percent	Number	Percent
Age 0 - 4	342	5.9%	1,896	6.8%	6,145	7.3%
Age 5 - 9	371	6.4%	1,966	7.0%	6,166	7.3%
Age 10 - 14	412	7.1%	2,034	7.3%	6,076	7.2%
Age 15 - 19	401	6.9%	2,043	7.3%	5,822	6.9%
Age 20 - 24	271	4.6%	1,683	6.0%	5,172	6.1%
Age 25 - 34	625	10.7%	3,706	13.3%	11,577	13.7%
Age 35 - 44	766	13.1%	3,712	13.3%	11,162	13.2%
Age 45 - 54	743	12.7%	3,322	11.9%	9,670	11.4%
Age 55 - 64	817	14.0%	3,455	12.4%	9,782	11.6%
Age 65 - 74	714	12.2%	2,648	9.5%	7,739	9.1%
Age 75 - 84	298	5.1%	1,159	4.2%	4,007	4.7%
Age 85+	76	1.3%	292	1.0%	1,310	1.5%

Source: U.S. Census Bureau, Census 2010 Summary File 1. Esri forecasts for 2016 and 2021.



Demographic and Income Comparison Profile

7201 FM-725, New Braunfels, Texas, 78130
Rings: 2, 5, 7 mile radii

Prepared by Esri
Latitude: 29.60846
Longitude: -98.05437

2010 Race and Ethnicity	2 miles		5 miles		7 miles	
	Number	Percent	Number	Percent	Number	Percent
White Alone	4,480	87.2%	17,675	84.4%	53,028	82.6%
Black Alone	140	2.7%	645	3.1%	2,704	4.2%
American Indian Alone	43	0.8%	150	0.7%	424	0.7%
Asian Alone	23	0.4%	126	0.6%	531	0.8%
Pacific Islander Alone	3	0.1%	9	0.0%	27	0.0%
Some Other Race Alone	330	6.4%	1,813	8.7%	5,870	9.1%
Two or More Races	117	2.3%	513	2.5%	1,583	2.5%
Hispanic Origin (Any Race)	1,696	33.0%	8,052	38.5%	27,117	42.3%

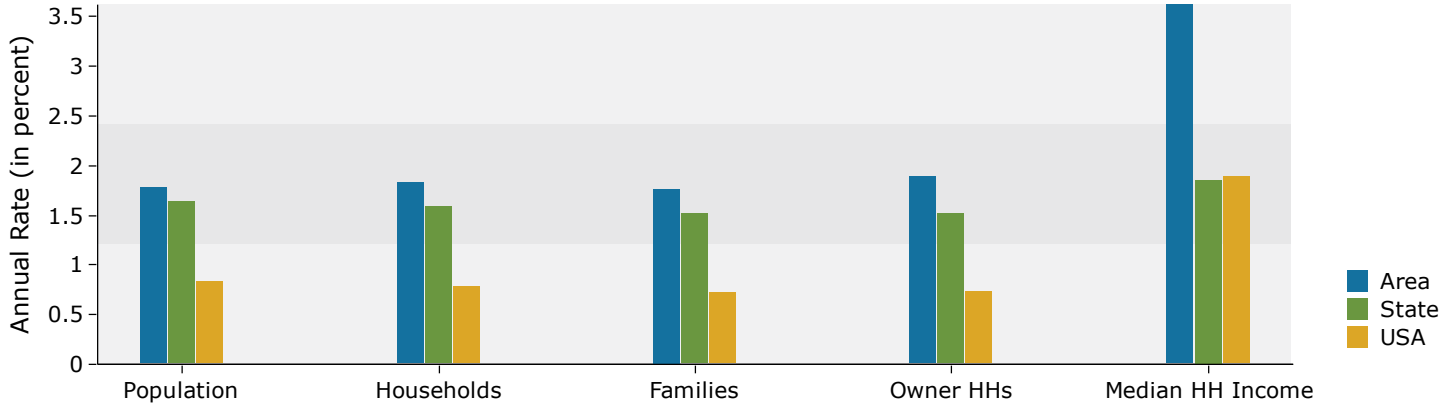
2016 Race and Ethnicity	2 miles		5 miles		7 miles	
	Number	Percent	Number	Percent	Number	Percent
White Alone	4,542	85.0%	19,935	82.2%	60,275	80.7%
Black Alone	182	3.4%	889	3.7%	3,600	4.8%
American Indian Alone	46	0.9%	185	0.8%	534	0.7%
Asian Alone	28	0.5%	173	0.7%	740	1.0%
Pacific Islander Alone	4	0.1%	12	0.0%	38	0.1%
Some Other Race Alone	396	7.4%	2,373	9.8%	7,413	9.9%
Two or More Races	146	2.7%	677	2.8%	2,097	2.8%
Hispanic Origin (Any Race)	1,976	37.0%	10,271	42.4%	33,513	44.9%

2021 Race and Ethnicity	2 miles		5 miles		7 miles	
	Number	Percent	Number	Percent	Number	Percent
White Alone	4,873	83.5%	22,561	80.8%	67,205	79.4%
Black Alone	240	4.1%	1,174	4.2%	4,622	5.5%
American Indian Alone	54	0.9%	233	0.8%	659	0.8%
Asian Alone	37	0.6%	232	0.8%	987	1.2%
Pacific Islander Alone	6	0.1%	16	0.1%	49	0.1%
Some Other Race Alone	454	7.8%	2,879	10.3%	8,572	10.1%
Two or More Races	174	3.0%	823	2.9%	2,535	3.0%
Hispanic Origin (Any Race)	2,363	40.5%	12,804	45.9%	40,146	47.4%

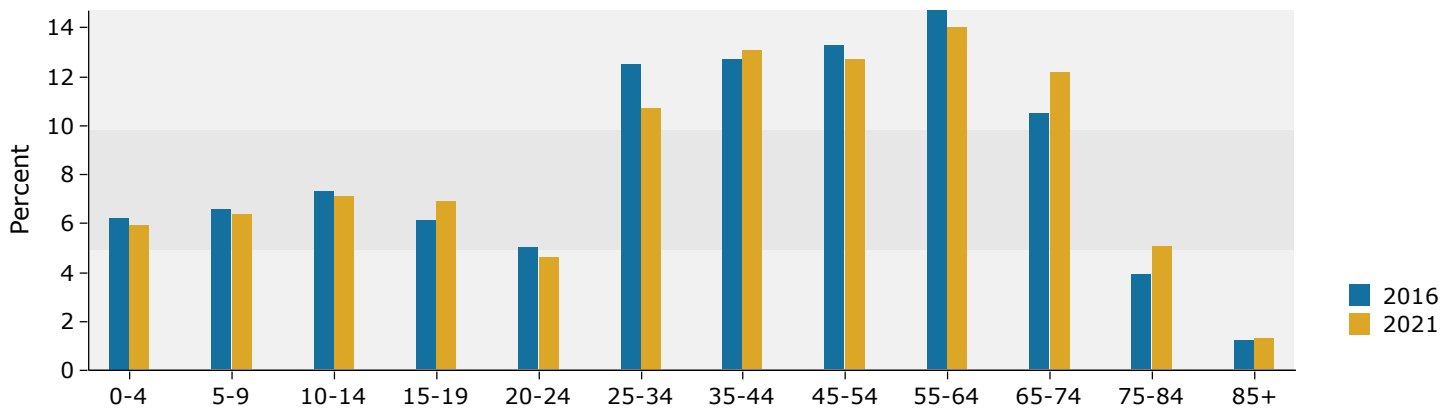
Source: U.S. Census Bureau, Census 2010 Summary File 1. Esri forecasts for 2016 and 2021.

2 miles

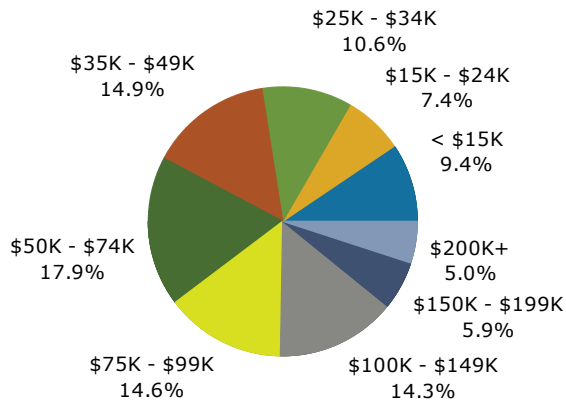
Trends 2016-2021



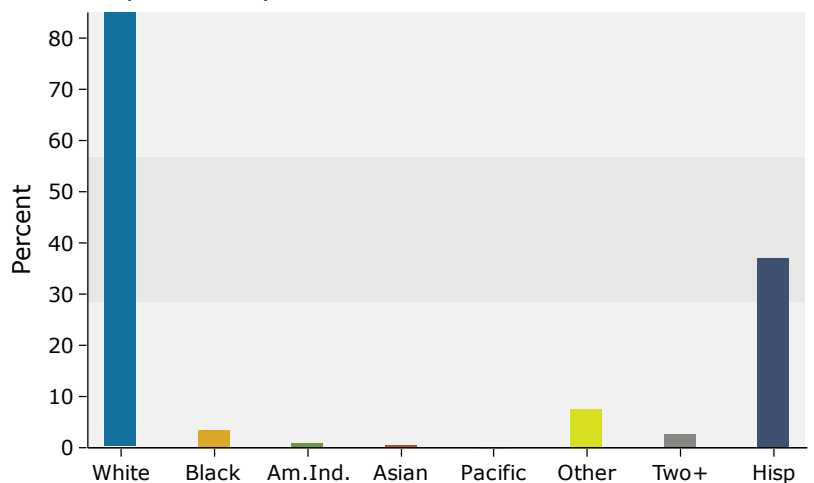
Population by Age



2016 Household Income



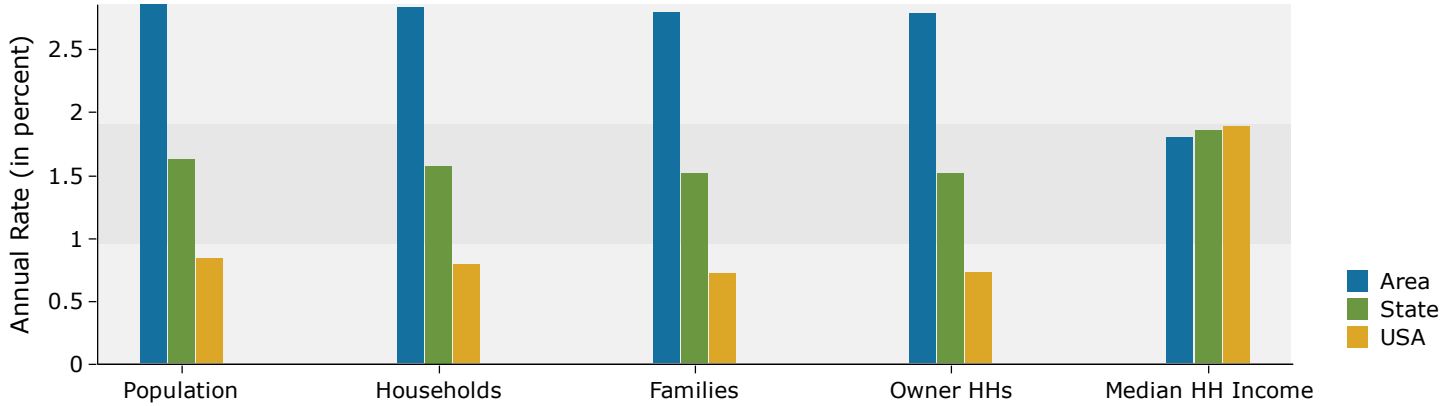
2016 Population by Race



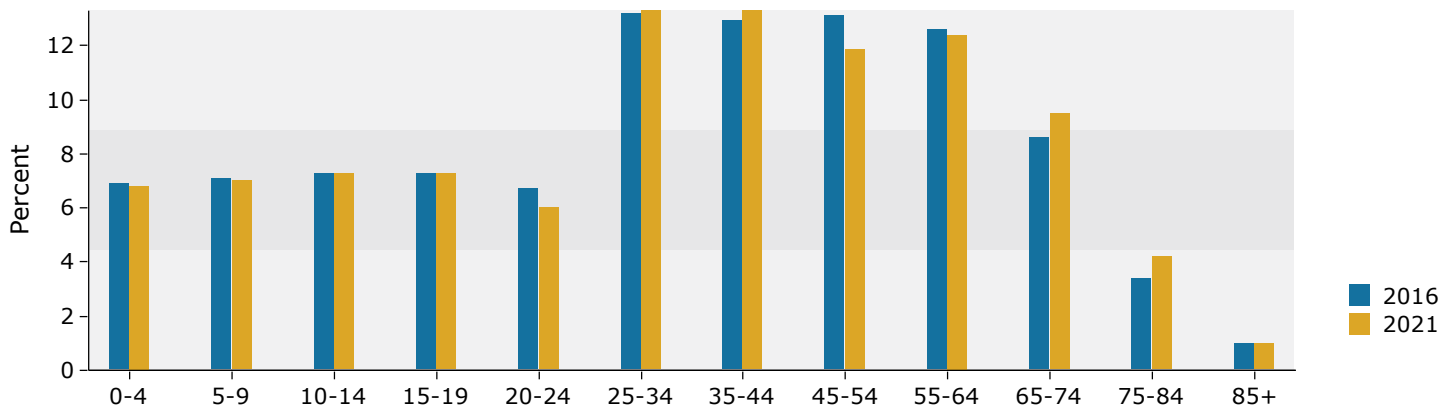
Source: U.S. Census Bureau, Census 2010 Summary File 1. Esri forecasts for 2016 and 2021.

5 miles

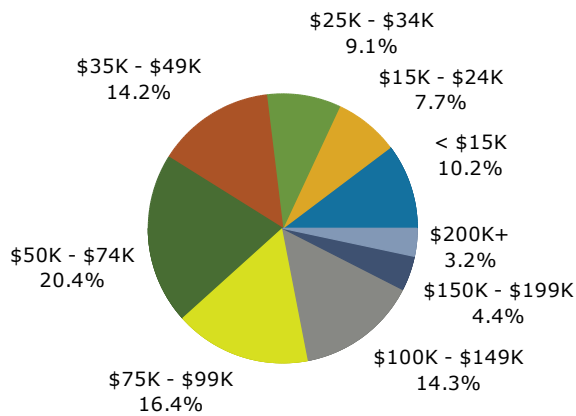
Trends 2016-2021



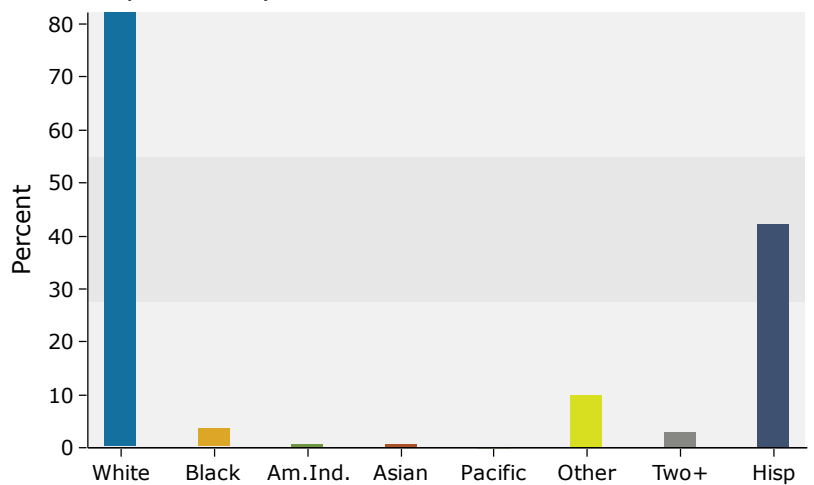
Population by Age



2016 Household Income



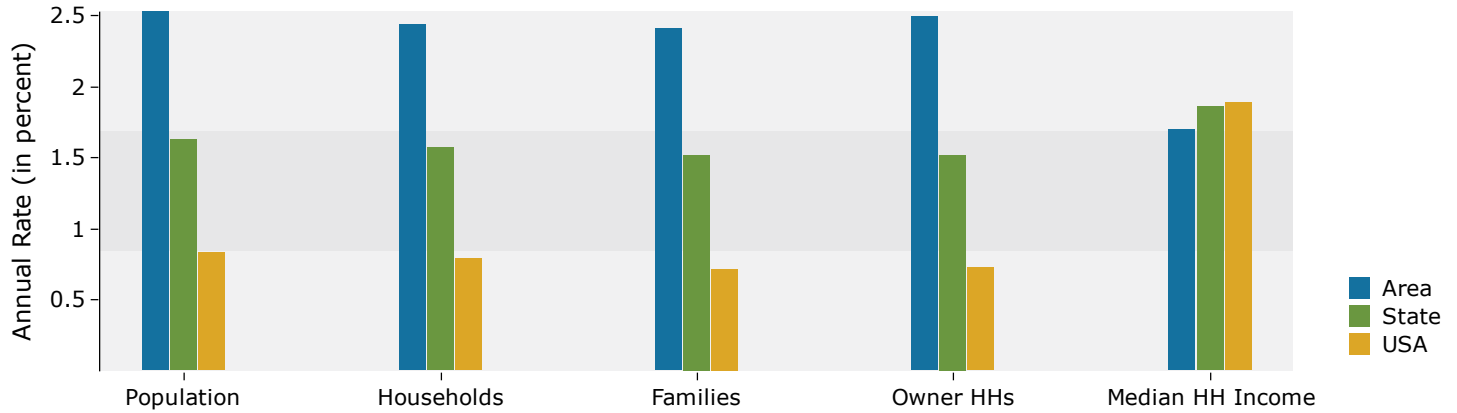
2016 Population by Race



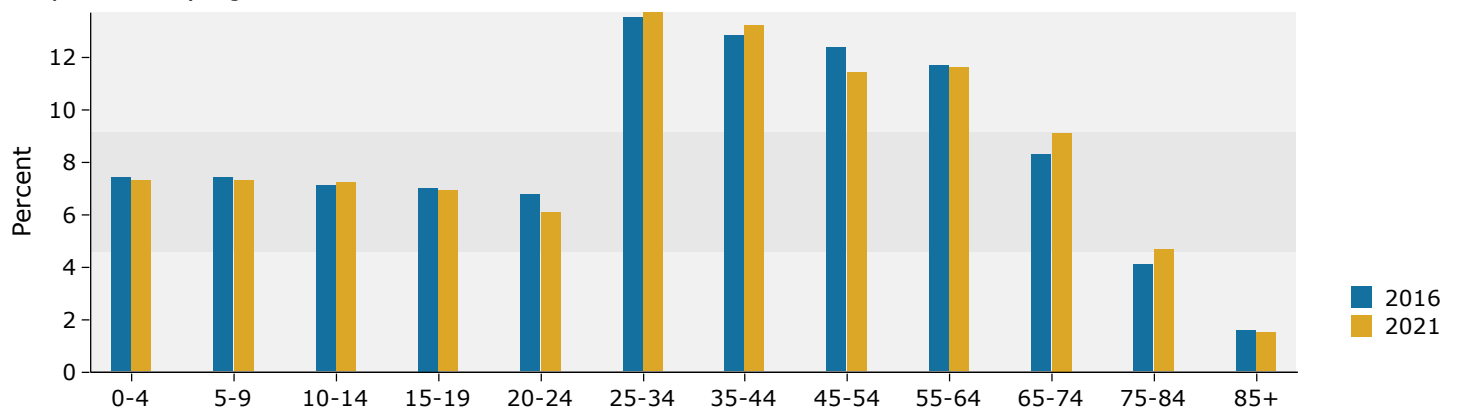
Source: U.S. Census Bureau, Census 2010 Summary File 1. Esri forecasts for 2016 and 2021.

7 miles

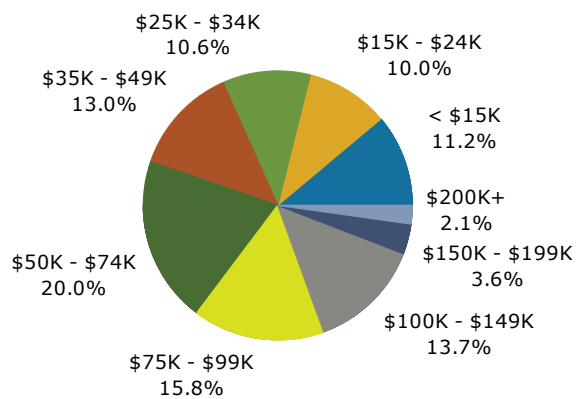
Trends 2016-2021



Population by Age



2016 Household Income



2016 Population by Race

